



# Kansas City Construction Trade Careers

Boilermaker  
Bricklayer  
Cabinetmaker  
Carpenter  
Cement Mason  
Electrician  
Elevators Constructor  
Floorlayer  
Glazier  
Heat & Frost  
Iron worker  
Laborer  
Line Constructor  
Millwright  
Operating Engineer  
Painter  
Pipe Fitter  
Plasterer  
Plumber  
Roofer  
Sheet Metal Worker  
Sprinkler Fitter



**Richard Bruce, Ph.D.**  
Education & Training Director

105 West 12th Avenue  
North Kansas City, MO 64116  
rbruce@buildersassociation.com

Direct (816) 595-4143  
Main (816) 471-0880  
Fax (816) 471-5566

**Teamsters**  
**Kansas City Construction Apprenticeship Programs**

<b>Craft</b>	<b>Contact</b>	<b>Address</b>	<b>Phone</b>
Boilermakers #83	Joe Lewandowski	5910 E. 86 <sup>th</sup> St. Kansas City, MO 64138	816-523-8300 816-523-2832 Fax
Bricklayers & Allied Craftworkers #15	Don Hunt	105 W 12 <sup>th</sup> Ave. N. Kansas City, MO 64116	816-471-0880x1348
Carpenters, Cabinetmakers, Floorlayers, & Millwrights	Bob James Hale	105 W 12 <sup>th</sup> Ave. N. Kansas City, MO 64116	816-471-0883
Cement Masons #518	Brian Randle	105 W 12 <sup>th</sup> Ave. N. Kansas City, MO 64116	816-471-0880 x1332 816-471-5566 Fax
Electricians # 124	Jim Cianciolo	303 East 103 <sup>rd</sup> Terrace, Kansas City, MO 64133	816-942-3242 x0 816-942-0854 Fax
Elevator Constructors # 12	Tim Daly	6320 Manchester Ave. # 44 Kansas City, MO 64133	816-358-1312 816-313-5645 Fax
Floorlayers District Council # 3	Todd Doree	9902 E 62 <sup>nd</sup> St. Raytown, MO 64133	816-358-2440 816-358-5430
Glaziers District Council #3	Chad Dalton	105 W 12 <sup>th</sup> Ave. N. Kansas City, MO 64116	816 471-0880x1338 816 471-5566 Fax
Heat & Frosts # 27	Scott VanBerbber	400 S Main Independence, MO 64050	816 252-0588 816 252-8837 Fax
Iron Workers #10	Brian Garrett	105 W 12 <sup>th</sup> Ave. N. Kansas City, MO 64116	816 471-0880x1310 816 471-3377 Fax
Construction Craft Laborers #1290	Kevin Boydston	8944 Kaw Drive Kansas City, KS 66111	913 441-6100 913-441-6128 Fax
Operating Engineers # 101	Gary Edmondson	22770 Route 273 Weston, MO 64098	816 640-2336 816 640-3134 Fax
Painters District Council # 3	Dan Hink	105 W 12 <sup>th</sup> Ave. N. Kansas City, MO 64116	816 471-0880x1332 816 471-6178 Fax
Pipefitters # 533	Marty Sanderholm	9876 Hickman Mills Drive Kansas City, MO 64138	816 761-8800 816 761-8801 Fax
Plasterers # 518	Brian Randle	105 W 12 <sup>th</sup> Ave. N. Kansas City, MO 64116	816 471-0880x1332 816 471-5566 Fax
Plumbers # 8	Frank Murray	9876 Hickman Mills Drive Kansas City, MO 64138	816 761-8800 816 761-8801 Fax
Roofers # 20	Matt Lloyd	10 South James St. Kansas City, KS 66118	913 281-2527 913 321-8488 Fax
Sheet Metal Workers # 2	Tony Keithley	9703 E 53 <sup>rd</sup> St. Raytown, MO 64133	816 353-0038 816 353-0486 Fax
Sprinkler Fitters # 314	Dennis Bajkawski	8510 Hillcrest Road Kansas City, MO 64138	816 444-5113 816 444-5614
Teamsters # 541	Ron Johnson	4501 Emanuel Cleaver II Blvd. Kansas City MO, 64130	816 921-1700 816 921-1706

Updated September 25, 2014

# What's an Apprenticeship Program?

Registered apprenticeship programs are designed to prepare workers for occupations that require a wide range of skills and knowledge. This preparation consists of on-the-job training and technical classroom instruction.

In an apprenticeship program the concept is to “earn as you learn.” An apprentice serves an internship with a contractor. The student generally works full-time and goes to school a minimum of 144 hours per year on a schedule predetermined by the respective craft. Most programs attend classroom and lab training of 200 hours per year or more.

An individual applies for the program and meets the programs requirements. Once the applicant secures employment with a contractor, the individual registers with the union apprenticeship program and completes the apprenticeship paperwork. The individual is then registered with the Department of Labor as an apprentice.

Once the apprentice is registered to a program they immediately begin working in the field. An apprentice begins serving an internship with a contractor working towards becoming a journeyperson. The internship starting wage is approximately half of a journeyperson's wages, currently \$13 to \$17 per hour, with a benefit package between \$7 to \$20 per hour. Total wages a contractor is paying between \$20 and \$30 per hour. This is a starting salary. An apprentice will typically receive a journeyperson's wages and complete fringe benefit package.

Apprenticeship program training is free. The apprentice receives a scholarship from the union apprenticeship programs and generally the scholarship is between 2-5 years, depending on the craft. The scholarships include the cost of enrollment and participation in the apprenticeship and training program, including training materials, instructor's salaries equipment, supplies, and related training materials. Cost of the scholarship varies with each program. They can range from \$10,000 to over \$35,000 depending on the construction craft and the length of the program.

Each apprenticeship program is overseen by a Joint Apprenticeship Training Committee (J.A.T.C.). The committee is formed by equal representation from Labor and Management and governed by the Department of Labor.

The JATC is responsible for the administrative portion of the training of Apprentices and Journeypersons and also administrates the Training Funds.

# Kansas City Construction Trades

## Craft Careers

### Boilermakers, Iron Ship Builders, Blacksmiths, Forgers, and Helpers

The Boilermakers are a diverse union of workers in construction, maintenance, manufacturing, professional emergency medical services, repair, and related industries. Boilermakers build and repair ships, fishing boats, ferries, barges, cranes, boilers, tanks, pressure vessels, plate and structural fabrications, as well as other things. These skilled workers often use acetylene torches, power grinders and other equipment for welding, burning, cutting, rigging, layout and bolting. It's hard work, and heavy lifting and dedication to the craft is required.



### Bricklayers and Allied Craftworkers

BAC represents all skilled trowel trades, workers, including bricklayers, tile setters, plasterers, cement masons, marble masons, restoration workers and terrazzo and mosaic workers. Their work can be seen on many buildings, homes, stadiums, monuments, and landmarks throughout many of the United States and Canada.



### Carpenters, Millwrights, Cabinetmakers, and Floorlayers

Carpenters are employed in almost every type of construction activity. Their work is basically commercial type building, concrete forms, interior systems, sheet rock, metal studs, acoustical ceilings and other related work. They are also involved in "rough" and "finish" type carpentry. Millwrights install and perform maintenance on machinery such as conveyor systems and generators. This field requires interpreting blueprints, and then drilling, welding and bolting to precise instructions, sometimes detailed to within a thousandth of an inch.



### Cement Masons' & Plasterers

OPCMIA members represent skilled plasterers, cement masons, shophands and associated members. Plasterers finish interior walls and ceilings of buildings, apply plaster on masonry, metal, wirelath, or gypsum. Bridges, canals, dams, reservoirs, roads and many other engineering feats would be impossible without the skills of OPCMIA cement masons. Cement masons are responsible for all concrete construction, including pouring and finishing of slabs.



## Electrical Workers

The IBEW represents workers in the electrical industry including construction, gas and electric utilities, telecommunications, railroads, and government agencies. Construction and residential electricians work in all phases of the electrical construction and service industry. Their worksites range from single-family residences to state-of-the-art industrial plants. Inside wire workers may install and maintain conduits, switches and converters, as well as wire lighting to complex systems incorporating computerization and high technology. Electricians work in the electric sign industry and increasingly perform more work in the installation of fiber optics and voice/data/video equipment.



## Elevator Constructors

The IUEC represent the most qualified and trained elevator constructors in the world. Members assemble, install and replace elevators, escalators, dumbwaiters, moving walkways and similar equipment in new and old buildings, elevator constructors also maintain and repair this equipment once it is in service, as well as modernize older equipment.



## Glaziers

Glaziers prepare and install various kinds of glass, mirrors, metal framing and doors-entrances to buildings. Floor coverers work with resilient floors, as well as carpet and decorative coverings. Exterior sign and display work, like billboards, is another choice. Other types of work are convention display and show decorators. The work also includes lifting and installing different types of glass and aluminum frames, workings at heights involving ladders, scaffolding, and other types of man lifting devices. Also involved are precise reading of measurements and working with a variety of hand and power tools. The glazier will furnish the following tools: hammer, glass pliers, and putty.



## Heat and Frost Insulators and Allied Workers

Members of this union apply insulation to pipes, tanks, boilers, ducts, refrigeration equipment and other surfaces requiring thermal control of temperatures. The responsibilities of these mechanics, improvers and apprentices also include the manufacture, fabrication, assembling, molding, erection, spraying, pouring, mixing, hanging, preparation, application, adjusting, alteration, repairing, dismantling, reconditioning, corrosive control, testing and maintenance of heat or frost insulation. Workers also handle insulation materials made of fiberglass, rubber, calcium silicate and urethane. Asbestos workers also do removal of asbestos containing materials.







### **Iron Workers**

Members of the Iron Workers assemble and erect steel framework and other metal parts in buildings and on bridges, dams, skyscrapers, factories, and other steel structures. They raise, place, and join steel girders and columns to form structural frameworks, including the welding for metal decking.



### **Laborers'**

LIUNA- the laborers' International Union of North America – is the most progressive, aggressive, and fastest-growing union of construction workers, and one of the most diverse and effective unions representing public service employees.



### **Operating Engineers**

The International Union of Operating Engineers is a labor union within the AFL-CIO representing primarily construction workers who work as heavy equipment operators, mechanics, surveyors, and stationary engineers who maintain heating and other systems in buildings and industrial complexes in the United States and Canada. Founded in 1896, it currently represents roughly 400,000 workers in approximately 170 local unions and operates nearly one hundred apprenticeship programs.



### **Painters and Allied Trades**

IUPAT members work in one or more of several crafts: painting, wallpaper hanging, glazing (glass work), drywall and taping, floor covering, and sign and display work.

Painters and paperhangers work in industrial, commercial, and residential settings from bridges and ships to interior wall of office buildings and homes. Drywall finishers tape, fill in, and smooth seams in sheets of drywall. Glaziers prepare and install various kinds of glass, mirrors, metal framing, and doors/entrances to buildings. Floor coverers work with resilient floors as well as carpet and decorative coverings. Exterior sign and display work, like billboards, is another choice. Other types of work are convention display and show decorators.



### **Plumbers, Pipefitters & Sprinklerfitters**

UA is a multi-craft union that represents plumbers and pipe, sprinkler, and refrigerator fitters as well as service technicians. All of these jobs require the installation, remodeling or maintenance of systems that carry water, steam, air, and other liquids or gasses necessary for sanitation, industrial production, heating and air conditioning, and many other uses. Workers measure, cut, and bend pipe as well as weld, braze, caulk, solder, glue, or thread joints at residential and commercial job sites.

### **Roofers, Waterproofers, and Allied Workers**

Members of the Roofers union install new roofs and remove old roofs using a variety of materials. Roofers install hot built-up and single-ply roofing systems on mostly commercial/industrial structures. Waterproofers install moisture-resistant products on below-grade structures and other surfaces to prevent water intrusion into buildings. The work is performed in all weather conditions. Members also operate a variety of mechanical and electrical equipments associated with the installation of roofing and waterproofing products.



### **Sheet Metal Workers**

SMWIA members work in several industries. Sheet metal workers fabricate, install, and service heating, venting, and air conditioning systems, blowpipe and industrial systems, metal roofing, coping and flashing, and stainless steel work for restaurants, kitchens, and hospitals. They prepare shop and field drawings manually and with computer programs. Members also provide HVAC/R service.



### **Teamsters**

The Teamster represent 1.4 million working men and women in virtually every occupation throughout the United States and Canada – including many in the construction industry.

Two-thirds of Teamsters members work in one of five divisions: warehouse, parcel, freight, public employees, and industrial trades. The public employees sector is the union's fastest-growing division.



## Application Information

October 28, 2014

### Bricklayers & Pointer, Caulker, Cleaners

baclocal15.org

**Don Hunt**, Coordinator

816.595.4148

**Tammy Stuhlman**, Assistant

816.595.4135

#### Applications accepted:

Every Wednesday

from 8:00 – 10:00 AM

#### Requirements:

- copy of birth certificate
- copy of high school diploma or GED
- DD215 if applicable

### Carpenters, Cabinetmakers, & Millwrights

cjtf.org

**Bob Hale**, Coordinator

**Brent Sanders**, Lead Instructor

**Sarah McDaniel**, Office Manager

816.595.4133

**Angie Newton**, Assistant

816.595.4168

#### Applications accepted:

Tuesdays and Thursdays

from 8:00 – 10:00 AM

#### Requirements:

- copy of birth certificate
- copy of high school diploma or GED

### Cement Masons & Plasterers

opcmia518.org

**Brian Randle**, Coordinator

816.595.4132

**Melissa Medved**, Assistant

816.595.4147

#### Applications accepted:

First and third Mondays of each month

from 8:00 AM – 12:00 PM

#### Requirements:

- copy of birth certificate
- copy of high school diploma or GED
- photo ID
- Social Security card

### Glaziers

dc3jatc.com

**Chad Dalton**, Coordinator

816.595.4138

**Karla Underwood**, Assistant

816.595.4142

#### Changes effective September 1, 2014:

##### Applications accepted:

Monday – Thursday

from 8:00 AM – 10:00 AM

##### Requirements:

- copy of birth certificate
- copy of high school diploma, GED, or proof of enrollment in a certified general education program
- valid driver's license
- transcripts
- \$20.00 application fee

### Ironworkers

ironworkers10.com

**Brian Garrett**, Director

816.595.4134

**Tonya Klima**, Assistant

816.595.4110

#### Changes effective August 1, 2014:

##### Applications accepted:

Monday – Thursday

from 8:00 – 10:00 AM

##### Requirements:

- copy of birth certificate
- copy of high school diploma or GED
- valid driver's license
- \$20.00 application fee

### Painters

dc3jatc.org

**Dan Hink**, Coordinator

816.595.4136

**Karla Underwood**, Assistant

816.595.4142

#### Changes effective September 1, 2014:

##### Applications accepted:

Monday – Thursday

from 8:00 AM – 10:00 AM

##### Requirements:

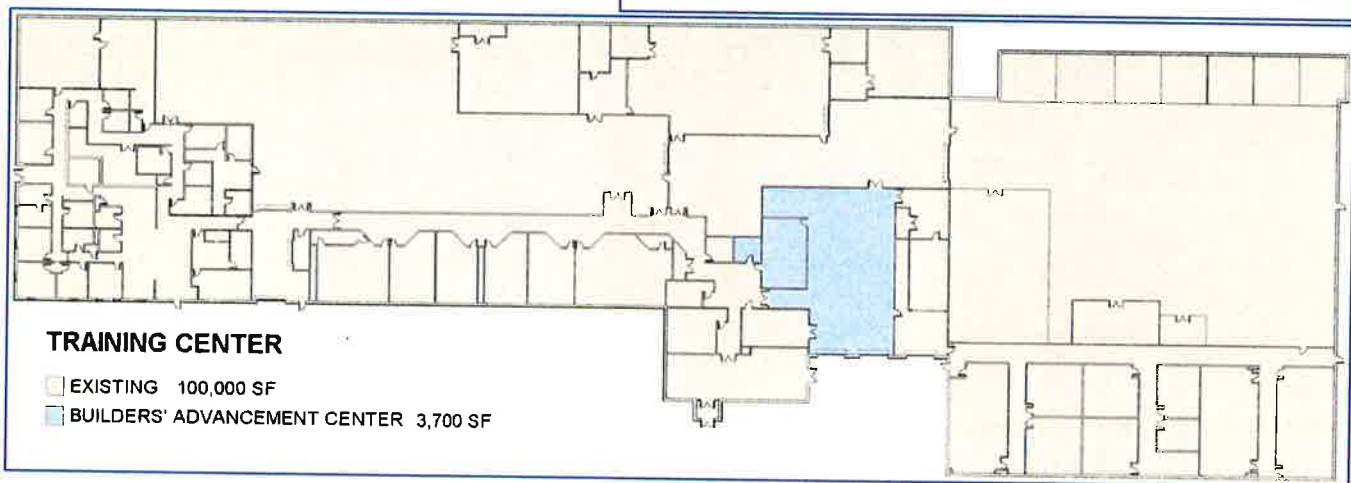
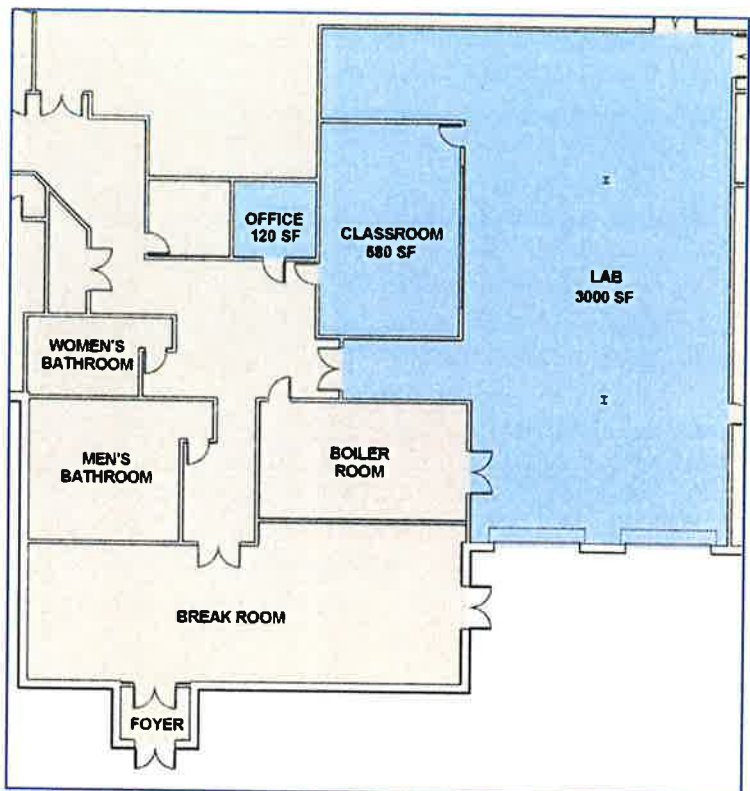
- copy of birth certificate
- copy of high school diploma, GED, or proof of enrollment in a certified general education program
- valid driver's license
- \$20.00 application fee





**Vision Statement**

*To advance quality and production with technology, tools, and education of a knowledge workforce.  
To supplement the skills training of our workforce.*



**Mission Statements**

**Career Exploration-** Improve the awareness of careers in the construction industry including careers in the trades and with Builders' Association member organizations. Through Build Your Career Days, local elementary, middle, and high school students will learn about the career opportunities in construction and take part in such hands-on activities as tying rebar, pouring concrete, laying brick, finishing drywall, and painting.

**Recruitment** - Recruit local youth, returning veterans, and adults into the apprenticeship programs and into careers with Builders' Association members.

**Quality** – Improve the soft skills of apprentices, journeypersons, and management personnel employed by Builders' Association member firms. Students will learn how to express their ideas through several forms of communication including e-mail, memos, and daily reports.

**Productivity** - Provide training and hands-on simulations in regard to operating BIM viewers, carrying out integrated project design, and applying Lean Construction principles. Participants will be exposed to the technological advances aimed at decreasing waste and improving productivity in each stage of the project life cycle including pre-construction planning, construction operations, and building maintenance.